

Article datasheet

Blade Terminal 2.8x0.8 | 0.5-1 mm² Plain Brass

Article-No.: 012.27.282

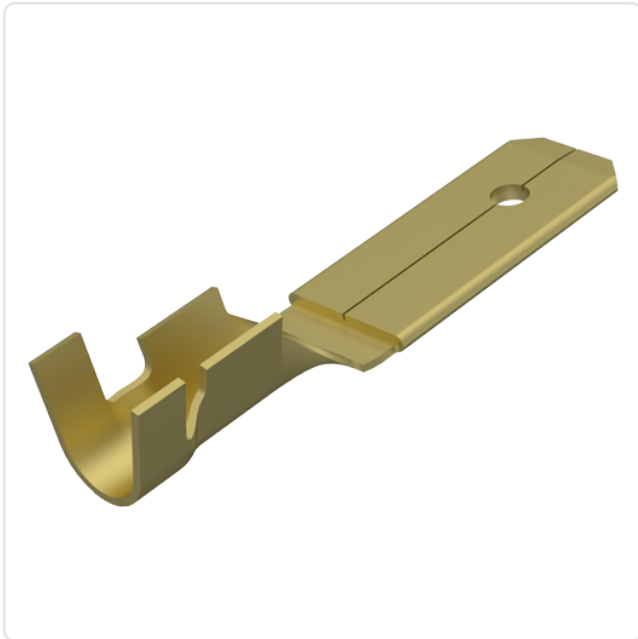


Image may be similar

Bending Angle [°]:	0
Finish:	Plain
Material:	Brass
Material Group:	Brass
Plug-In Length [mm]:	5.5
Size [mm]:	2.8x0.8
Tabs:	1
Wire Cross Section [mm ²]:	0.5-1.0
Weight:	0.22g
Conformities:	



You can find all information on the web on our article detail page

Would you like individual advice?

We look forward to your email to products@ettinger.de.

Subject to change and errors.

