

Article datasheet

## Captive Screw M2.5x12 Flat Head A1 Plain Stainless Steel Slotted

Article-No.: 001.84.259

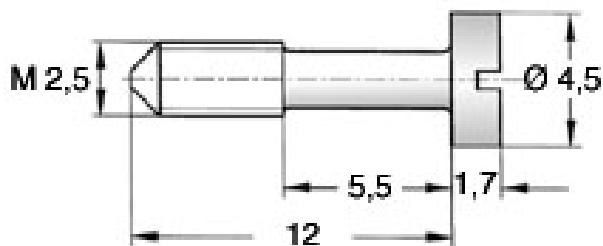


Image may be similar

Drive Type:	Slotted
Finish:	Plain
Head Diameter [mm]:	4.5
Head Height [mm]:	1.7
Head Shape:	Flat Head
Length [mm]:	12
Material:	Stainless Steel AISI 303 / A1
Material Group:	Stahl rostfrei
Reduced Shank Length [mm]:	5.5
Thread Size:	M2.5
Weight:	0.49g
Conformities:	



You can find all  
information on the web on  
our article detail page



Would you like individual advice?

We look forward to your email to [products@ettinger.de](mailto:products@ettinger.de).

Subject to change and errors.