

Article datasheet

Mounting Cube 2xM3 6x6x12 Brass nickel plated

Article-No.: 005.60.233

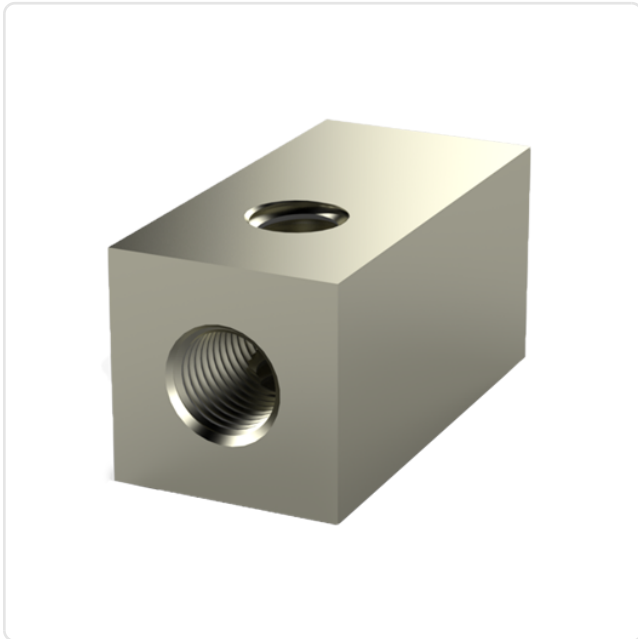


Image may be similar

Finish: Nickel-Plated, 3 µm, E1E
Length [mm]: 12
Material: Brass CW614N / CuZn39Pb3
Thread 1 / Hole 1: M3
Thread 1 Length [mm]: 12
Thread 2 / Hole 2: M3
Thread 2 Length [mm]: 6
Weight: 2.78g
Conformities:



You can find all information on the web on our article detail page

Would you like individual advice?

We look forward to your email to products@ettinger.de.

Subject to change and errors.

