

Article datasheet

## Captive Screw M2.5x10.8 Cheese Head Nickel-Plated Steel 4.8 Slotted

Article-No.: 001.84.242

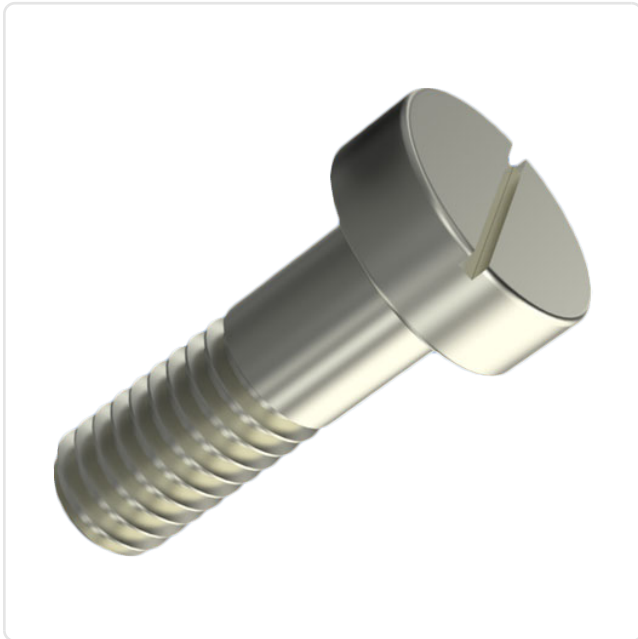
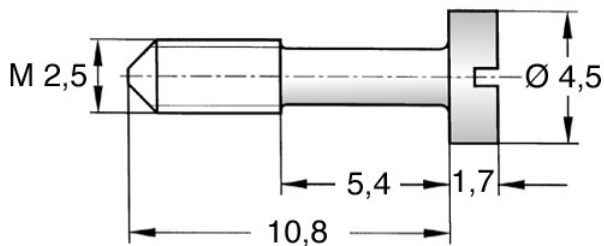


Image may be similar

Drive Type:	Slotted
Finish:	Nickel-Plated, 3 µm, E1E
Head Diameter [mm]:	4.5
Head Height [mm]:	1.7
Head Shape:	Cheese Head
Length [mm]:	10.8
Material:	Steel 4.8
Material Group:	Stahl
Reduced Shank Length [mm]:	5.4
Thread Size:	M2.5
Weight:	0.44g
Conformities:	



You can find all  
information on the web on  
our article detail page



Would you like individual advice?

We look forward to your email to [products@ettinger.de](mailto:products@ettinger.de).

Subject to change and errors.