

Article datasheet

Blade Terminal 2.8x0.8 | 60° | ø3.1 Tin-Plated Brass

Article-No.: 019.28.331

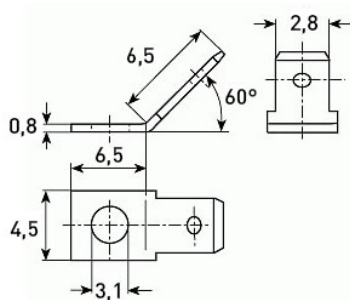


Image may be similar

Bending Angle [°]:	60
Finish:	Tin-Plated
Material:	Brass
Material Group:	Brass
Mounting Hole [mm]:	3.1
Plug-In Length [mm]:	5.5
Size [mm]:	2.8x0.5
Tabs:	1
Weight:	0.26g
Conformities:	<div> <div>Reach</div> <div>COMPLIANT</div> <div>✓</div> </div> <div> <div>RoHS</div> <div>COMPLIANT</div> <div>✓</div> </div> <div> <div>SVHC</div> <div>COMPLIANT</div> <div>✓</div> </div>



You can find all
information on the web on
our article detail page



Would you like individual advice?

We look forward to your email to products@ettinger.de.

Subject to change and errors.