

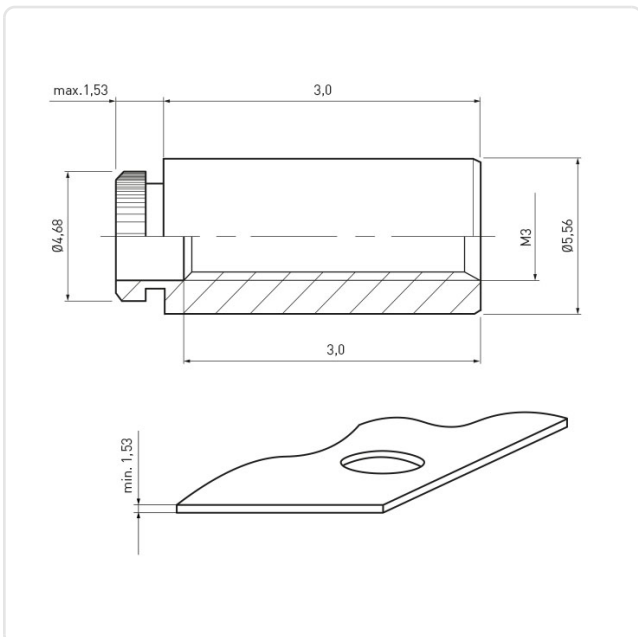
Article datasheet

Swage Standoff M3x3.0 Tin-Plated Steel

Article-No.: 004.60.305



Image may be similar



Area of Application:	For Plastics
Finish:	Tin-Plated
Length [mm]:	3
Material:	Steel
Minimum Edge Distance [mm]:	4.4
Outer Diameter [mm]:	5.6
Panel Hole Ø [mm]:	4.2
Panel Thickness [mm]:	1,5
Thread Size:	M3
Weight:	0.52g
Conformities:	



You can find all
information on the web on
our article detail page

Would you like individual advice?

We look forward to your email to products@ettinger.de.

Subject to change and errors.