




Article datasheet

Solder Terminal Pin 1.1x14.5mm 90° Brass tinned 1.0mm thick

Article-No.: 013.19.515

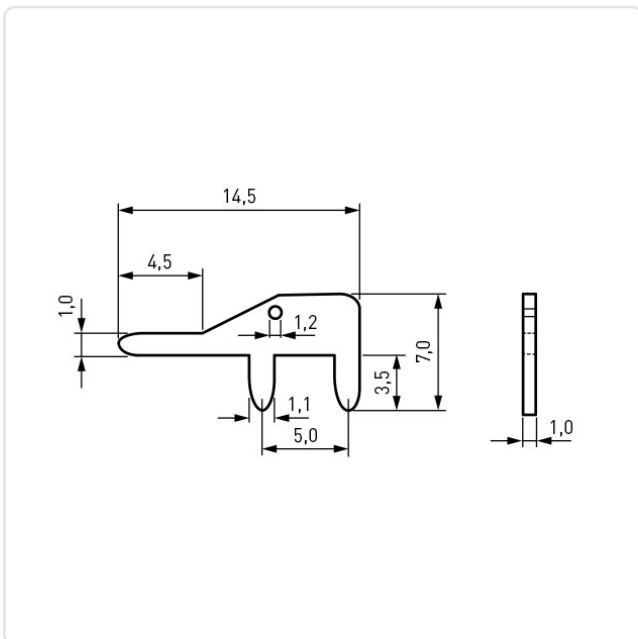


Image may be similar

Finish:	Tin-Plated
Length [mm]:	14.5
Material:	Brass CW508L / CuZn37, lead-free
Material Group:	Brass
Model:	flat
PCB Hole Ø [mm]:	1.3
Weight:	0.31g
Conformities:	  



You can find all
information on the web on
our article detail page



Would you like individual advice?

We look forward to your email to products@ettinger.de.

Subject to change and errors.