

Article datasheet

## Rivet Threaded for Sheed Thickness: 0,8 - 1,0 mm

Article-No.: 005.60.840

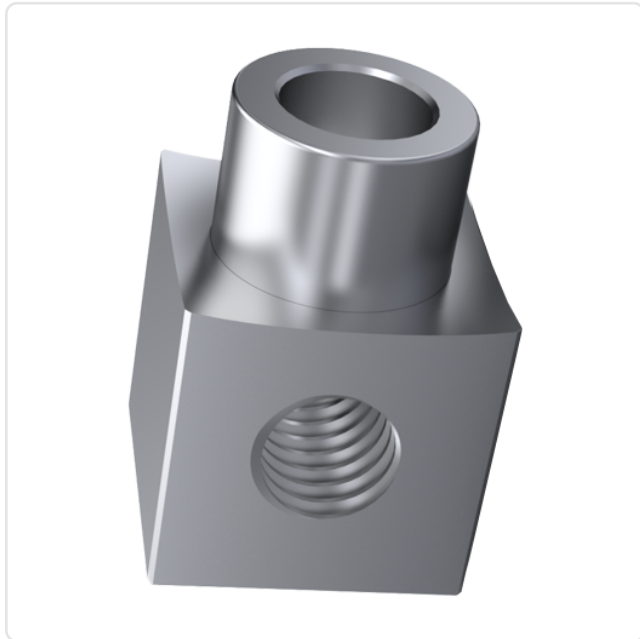


Image may be similar

Finish: Plain  
Length [mm]: 10.5  
Material: Aluminum ENAW-2011 / AlCu6BiPb  
Panel Thickness [mm]: 0,8 - 1,0  
Thread 1 / Hole 1: M4  
Thread 1 Length [mm]: 8  
Thread 2 / Hole 2:  $\varnothing 2,8$   
Thread 2 Length [mm]: 2.5  
Weight: 1.26g  
Conformities:



You can find all information on the web on our article detail page

Would you like individual advice?  
We look forward to your email to [products@ettinger.de](mailto:products@ettinger.de).

Subject to change and errors.

