

Article datasheet

Cut-Out Cover for D-Sub 9-pole Steel Housing for EMC Application

Article-No.: 076.76.095

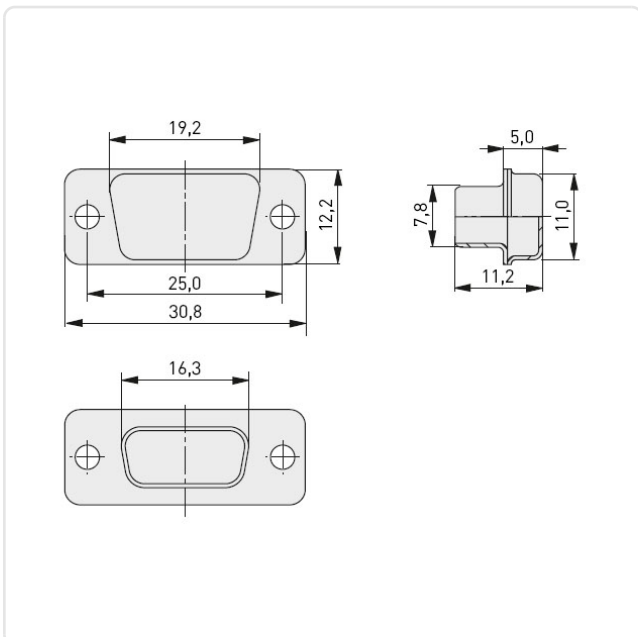


Image may be similar

Material: Steel
Material Group: Steel
Model: D-Sub
Mounting Hole [mm]: 3.2
Width [mm]: 30.8
Weight: 3.1g
Conformities:



You can find all information on the web on our article detail page



Would you like individual advice?

We look forward to your email to products@ettinger.de.

Subject to change and errors.