

Article datasheet

## Double End Sleeves 2x1.5mm<sup>2</sup> 8mm Polypropylene black

Article-No.: 018.82.150

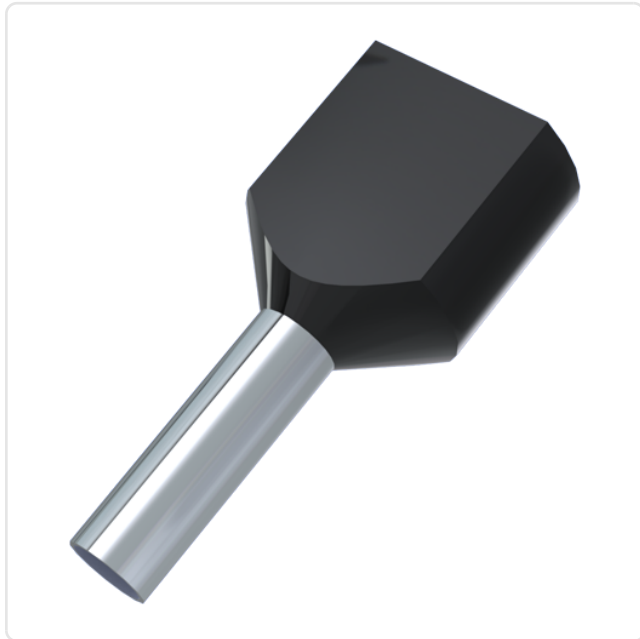


Image may be similar

Color:	Black
Finish:	Tin-Plated
Insulation:	Polypropylene
Length [mm]:	16
Material:	Electrolytic Copper
Material Group:	Electrolytic Copper
Plug-In Length [mm]:	8
Wire Cross Section [mm <sup>2</sup> ]:	1.5
Weight:	0.17g
Conformities:	<div> <div>Reach</div> <div>COMPLIANT</div> <div>✓</div> </div> <div> <div>RoHS</div> <div>COMPLIANT</div> <div>✓</div> </div> <div> <div>SVHC</div> <div>COMPLIANT</div> <div>✓</div> </div>



You can find all  
information on the web on  
our article detail page

Would you like individual advice?

We look forward to your email to [products@ettinger.de](mailto:products@ettinger.de).

Subject to change and errors.

