

Article datasheet

Fast On Receptacle 2.8x0.8mm Brass tinned 0.5-1.0mm² AWG 22-18

Article-No.: 012.28.102

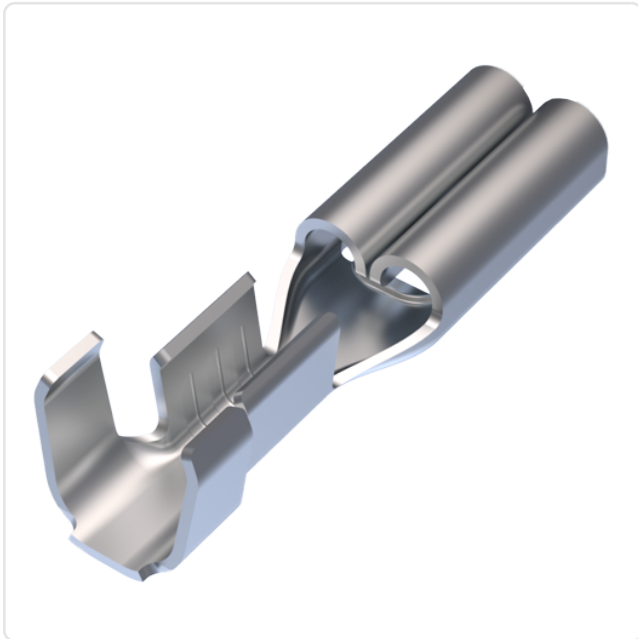


Image may be similar

Finish:	Tin-Plated
Length [mm]:	12.5
Material:	Brass
Material Group:	Brass
Size [mm]:	2.8x0.8
Wire Cross Section [mm ²]:	0.5-1.0
Weight:	0.25g
Conformities:	



You can find all
information on the web on
our article detail page

Would you like individual advice?

We look forward to your email to products@ettinger.de.

Subject to change and errors.