

Article datasheet

## Self-Clinching Nut M2.5 | 1.5 Tin-Plated Steel

Article-No.: 002.17.121

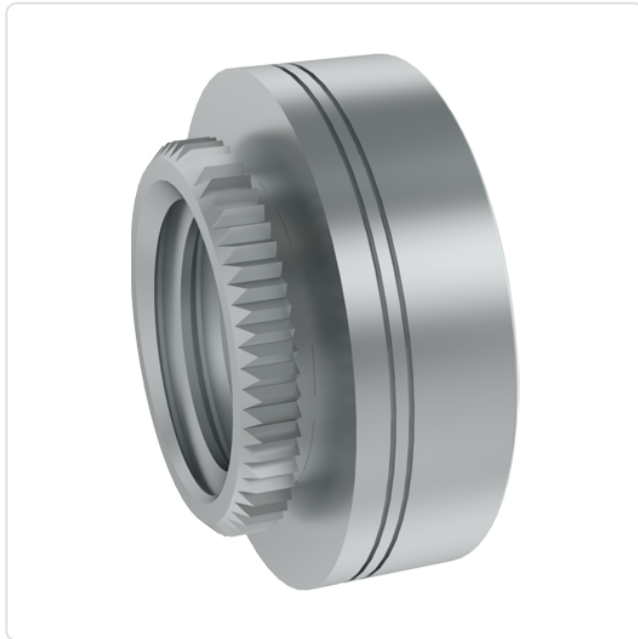


Image may be similar

Area of Application:	For Plastics
Finish:	Tin-Plated
Height [mm]:	1.5
Material:	Steel
Material Group:	Steel
Minimum Edge Distance [mm]:	4.4
Outer Diameter [mm]:	5.56
Panel Hole Ø [mm]:	4.2
Panel Thickness [mm]:	1,5
Thread Size:	M2.5
Weight:	0.33g
Conformities:	



You can find all information on the web on our article detail page

Would you like individual advice?

We look forward to your email to [products@ettinger.de](mailto:products@ettinger.de).

Subject to change and errors.

